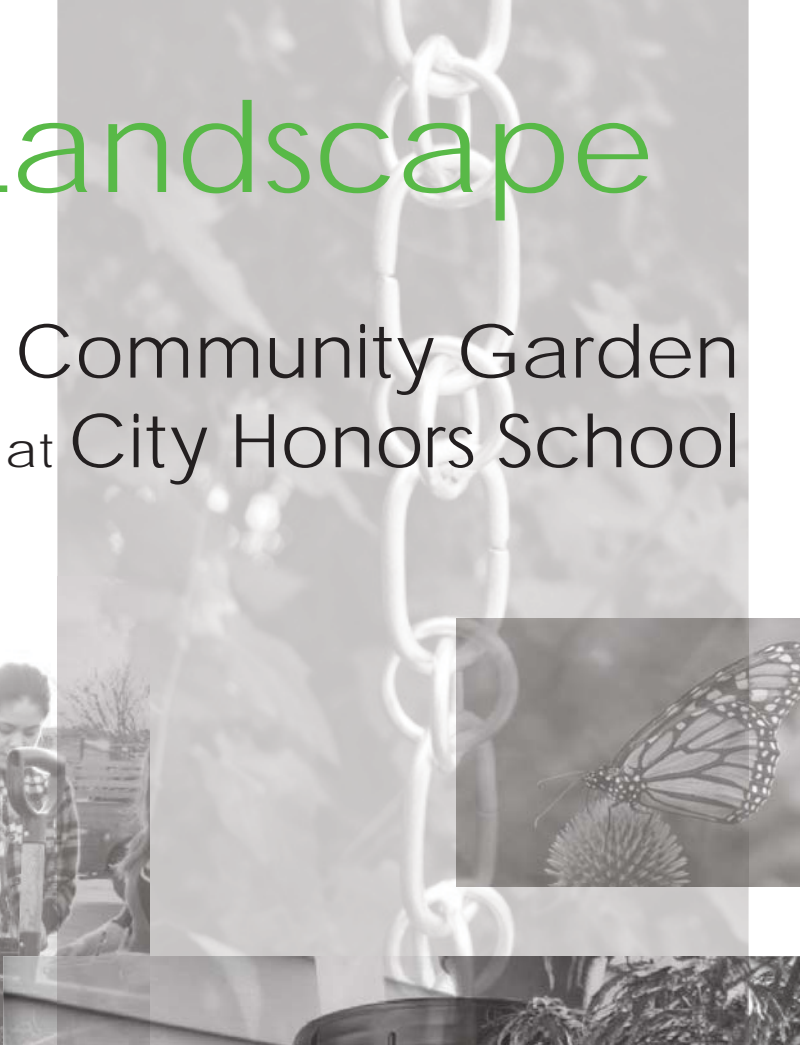


Learning in the Landscape

Pelion Community Garden
at City Honors School



Community Foundation
for Greater Buffalo

MAKE THE MOST OF YOUR GENEROSITY.

Garden Narrative

Vacant properties deter community reinvestment. With no prospect for permanent reuse, these properties will become unsightly and maintenance burdens for our municipal government. Reclaiming these properties should be a priority in any shrinking Rust Belt city, where the demand for vacant lots for redevelopment is stunted by an overwhelming surplus of similar properties. One valuable strategy to maximize Buffalo's blighted, vacant lots is to designate them as Community Gardens.

Community Gardens are right for Buffalo for many reasons:

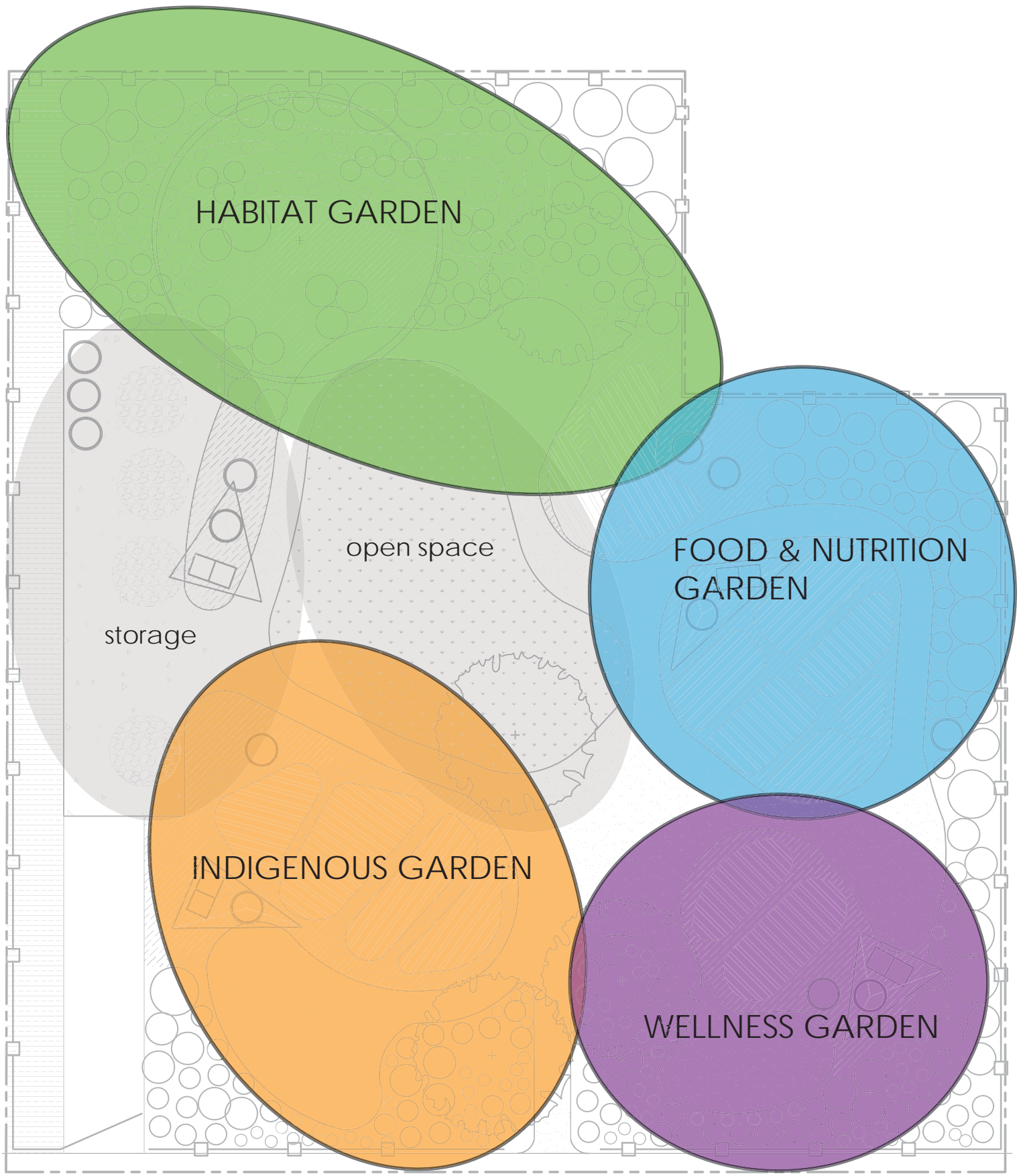
1. They will put weedy vacant lots to productive uses.
2. They enhance neighborhood aesthetics through a combination of greenery, flowers, and seasonal color.
3. They encourage socialization and local organization, thus bolstering community pride and a sense of ownership.
4. Community gardens provide a local source of food.
5. They can brand neighborhoods and mirror the cultural characteristics of a community.
6. They can educate youth about plants, soils, and other elements of nature.
7. One timely benefit is that, through the use of sustainable practices such as rain gardens and stormwater reuse, community gardens can reduce flows into our City's combined storm and sanitary sewer networks.

Frederick Law Olmsted, the landscape architect and designer of Buffalo's legacy parks and parkways, believed that introducing nature into cities would address the social and physical issues typical of the urban core. In this sense, the proposed Pelion Community Garden continues Olmsted's tradition of democratically distributed parks and natural areas throughout our city.

The Pelion Community Garden will offer four distinct plant areas. A Wellness Garden will highlight herbs and other plants traditionally used for medicinal purposes. A Habitat Garden will feature plants that provide food or cover for wildlife and will include a butterfly garden. A Food & Nutrition Garden will grow mostly edibles and will be proximate to the larger teaching garden plots. Finally, an Indigenous Garden will include plants used by Native Americans for food, building materials, and other daily needs.

Beyond the four styled plant areas, the Pelion Community Garden also will include functional areas. The Teaching Garden Plots will be used to grow food and herbs for consumption and education. A Lawn Area provides a place for play and to host larger gatherings. The lawn will be comprised of hardy seed types with limited watering and mowing needs. A Rain Garden will sustain plants tolerant of moist soils, encourage infiltration, and reduce flows into the local storm drainage system. A Composting and Materials Storage Area will utilize permeable pavement and provide room for seasonal materials staging. Rain Barrels and Catchment Tarps will capture and store rainwater for future reuse on site. In all, the Pelion Community Garden will teach students and local residents about the value of sustainable practices.

THEMED GARDENS



SITE



Community Foundation
for Greater Buffalo

MAKE THE MOST OF YOUR GENEROSITY.



PLAN

AREAS FUNCTIONS



split rail fence with vines
screens views in and
out of site



rain gardens collect storm
water while effectively
dispersing it into the
water table



using different garden plot
styles add character
and definition to
a space

signage use throughout
gardens can vary;
making people aware
of interactive or
"do not touch" areas



outdoor teaching zones
can be creative learning
areas focused toward
engaging students in
activities

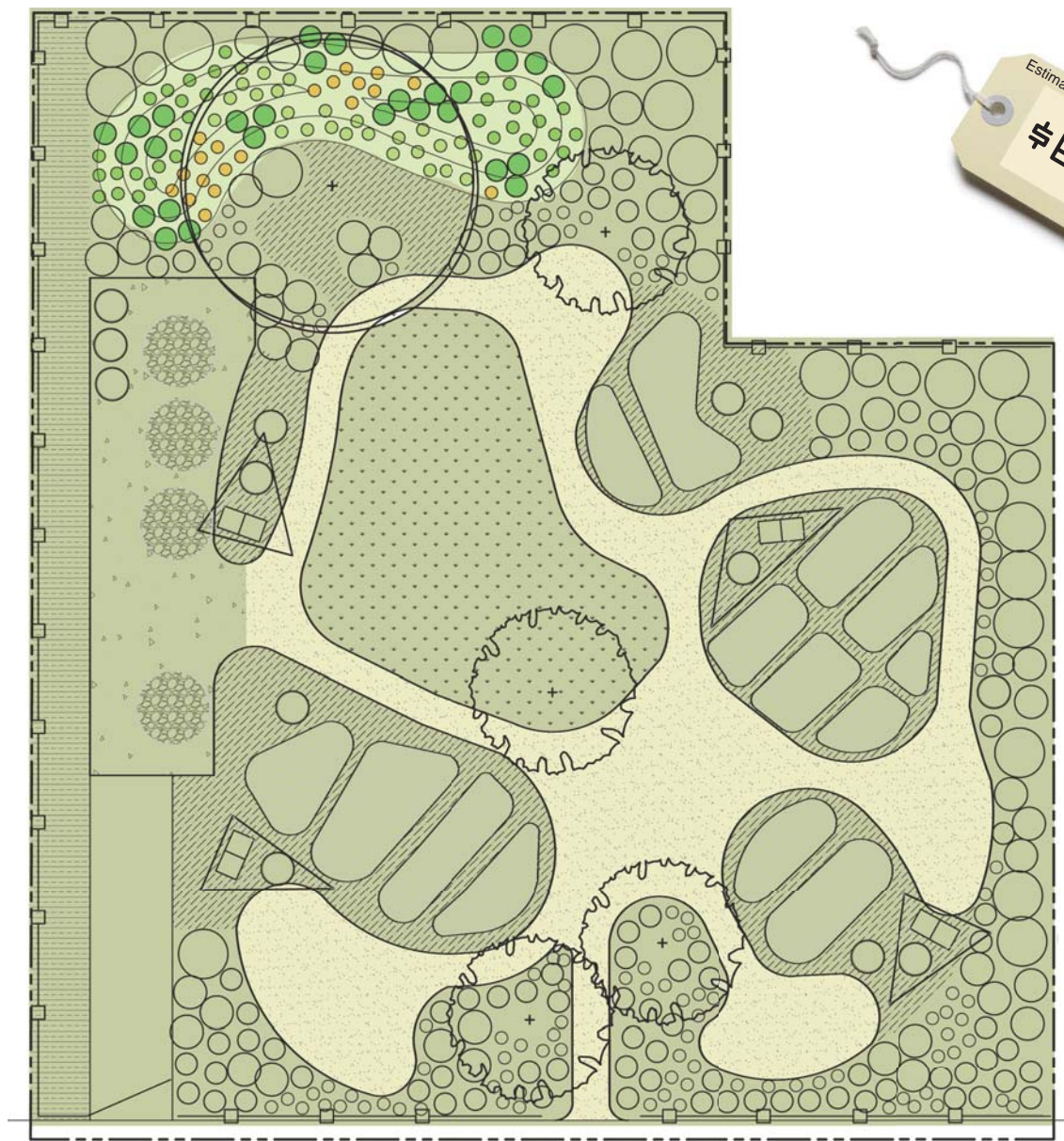


soil and compost storage
area allows easy access to
materials while providing
a dumping spot for
extra organics



screeded walks provide a
permeable walking surface
at an economical cost

Phase 1 of Construction



Volunteer Actions

- help clear site debris prior to earthwork process
- relocate desirable existing plant material
- plant rain garden and clean up any existing debris from construction process

Probable Cost of Construction

. earthwork- site preparation	\$ 1600
. limestone screeded walks with edge restraint	\$ 880
. rain garden soil mix	\$ 2550
. small shrubs for rain garden (27)	\$ 490
. perennials and ornamental grasses for rain garden (83)	\$ 830
. mulch for rain garden	\$ 150

Phase 2 of Construction



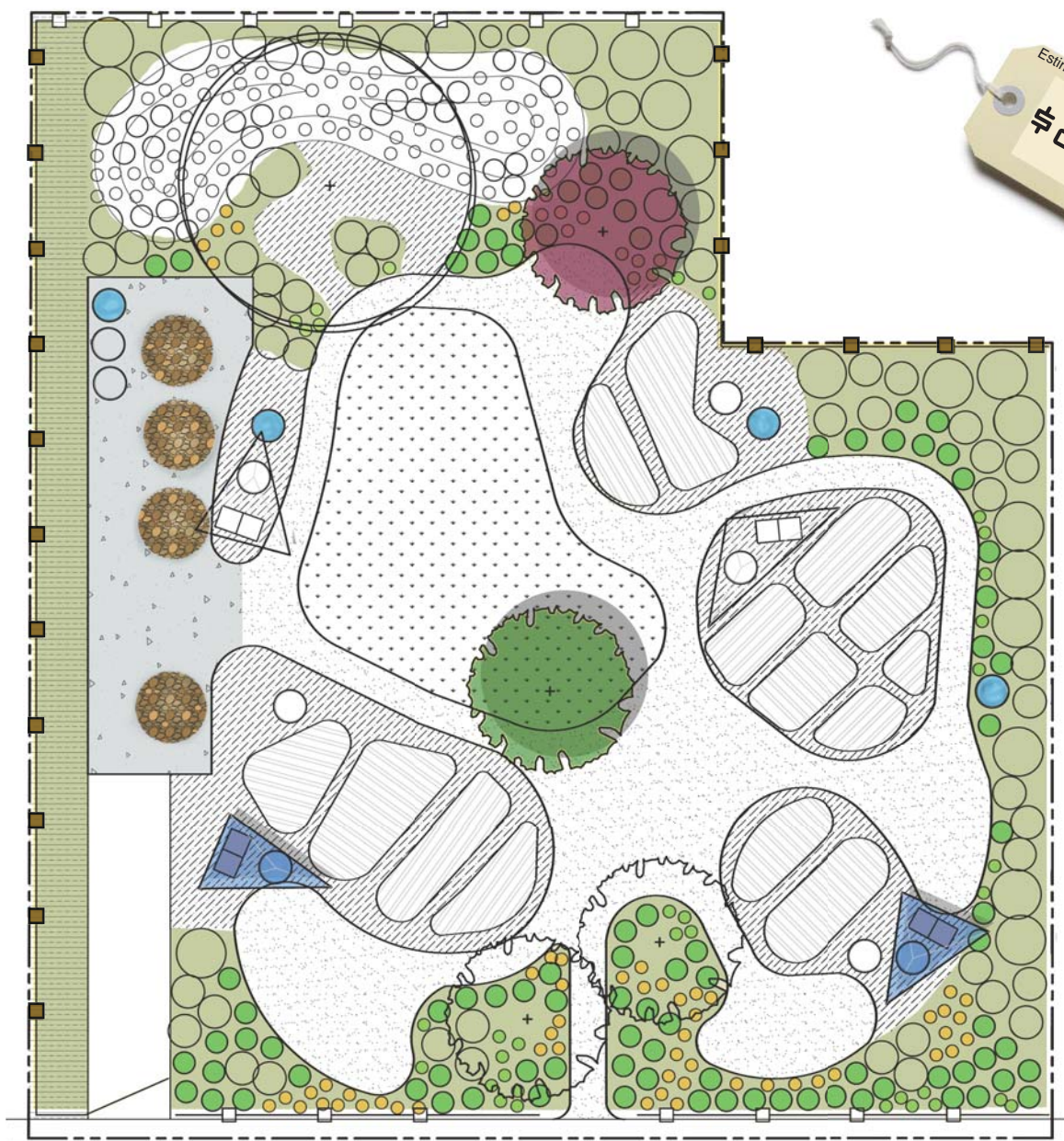
Volunteer Actions

- help in construction of split rail and stockade fences
- transfer soil and compost into place
- plant perimeter vegetation and mulch
- plant 2 trees
- seed lawn area and driveway (spread hay to help capture moisture)
- start growing garden plants and mulch paths
- place rain barrels
- math and science rain catchment design competition

Probable Cost of Construction

. split rail fence and gate for front	\$ 810
. 6' stockade fence for back	\$ 590
. topsoil / compost mix @ 12" depth for plantings	\$ 4830
. topsoil / compost mix @ 20" depth for gardening	\$ 2100
. hardwood mulch for walks	\$ 330
. perimeter plantings (75)	\$1510
. trees (2)	\$ 400
. lawn topsoil & sod	\$ 390
. grass seed for maintenance drive	\$ 150
. tool storage unit (1)	\$ 100
. rain catchment (1)	\$ 150
. mulch for plantings	\$ 250
. rain barrels- donated (4)	\$ 0

Phase 3 of Construction



Estimated Cost:
\$8,630

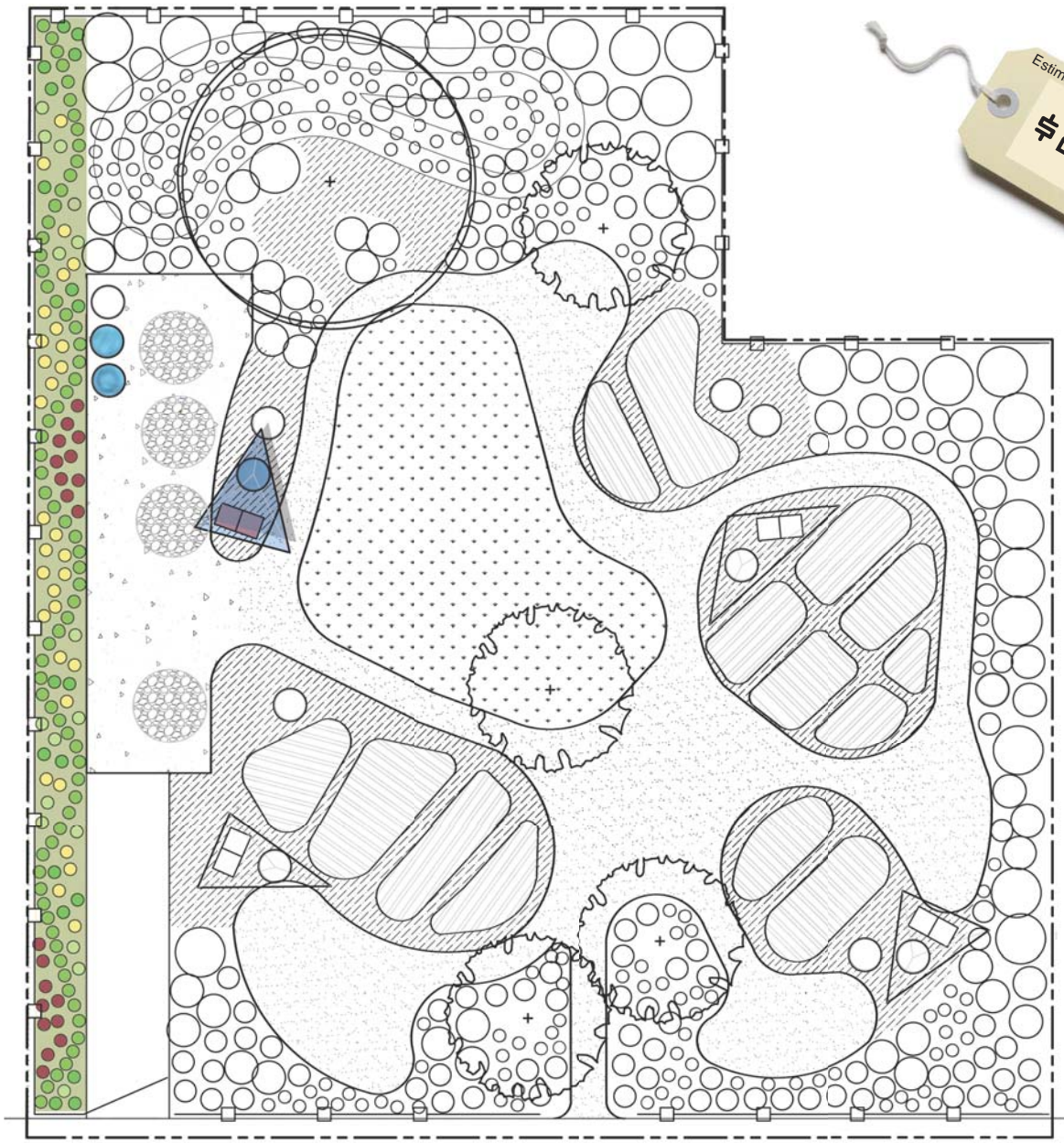
Volunteer Actions

- help construct remainder of split rail fence
- finish planting grasses and perennials and add mulch
- plant 2 trees
- help construct rain catchments
- place rain barrels

Probable Cost of Construction

. split rail fence to finish	\$ 1500
. permeable concrete over permeable base	\$ 3090
. small shrubs (90)	\$ 1620
. perennials / ornamental grasses / herbs (102)	\$ 1020
. mulch for plantings	\$ 300
. trees (2)	\$ 400
. rain barrels (5)	\$ 200
. tool storage unit (2)	\$ 200
. rain catchment (2)	\$ 300
. compost materials- donated	\$ 0

Phase 4 of Construction



Volunteer Actions

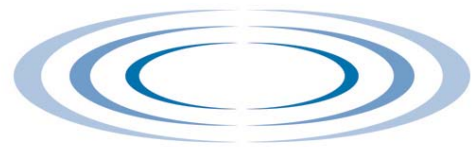
- plant perennial boarder and mulch
- help construct final rain catchment
- place rain barrels
- design art sculptures for garden
- construct bird and bat houses
- install benches and other donations

Probable Cost of Construction

. perennials / ornamental grasses / herbs (102)	\$ 1570
. mulch for plantings	\$ 130
. rain barrels (3)	\$ 120
. tool storage unit (1)	\$ 100
. rain catchment (1)	\$ 150
. compost materials, bird houses, benches- donated	\$ 0

Donations, Materials & Items of Enhancement

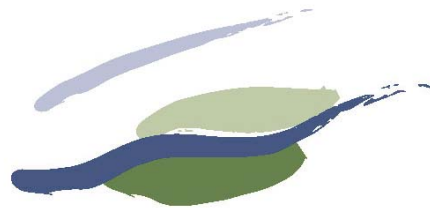




Community Foundation for Greater Buffalo

MAKE THE MOST OF YOUR GENEROSITY.

2 0 1 1



JOY KUEBLER
LANDSCAPE ARCHITECT, PC

**BEST STREET
BUFFALO, NY**

